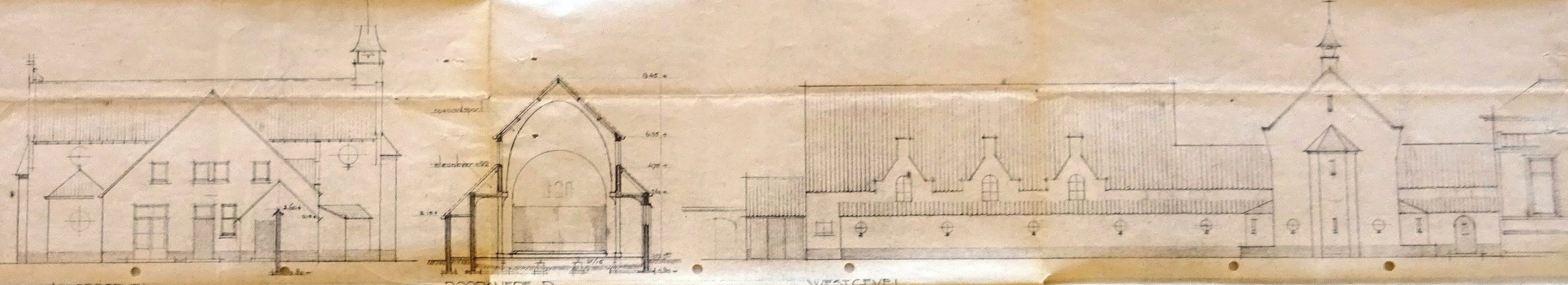


DOORDEDE A

DOORDEDE B

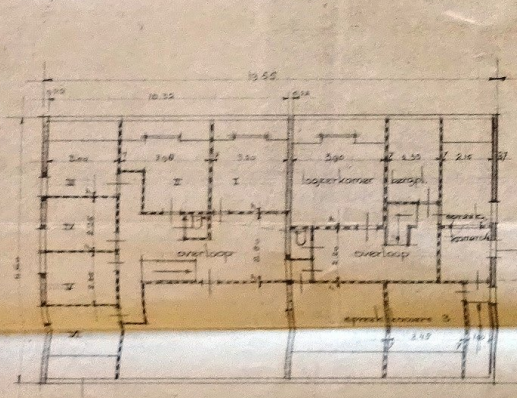
OOSTGEVEL



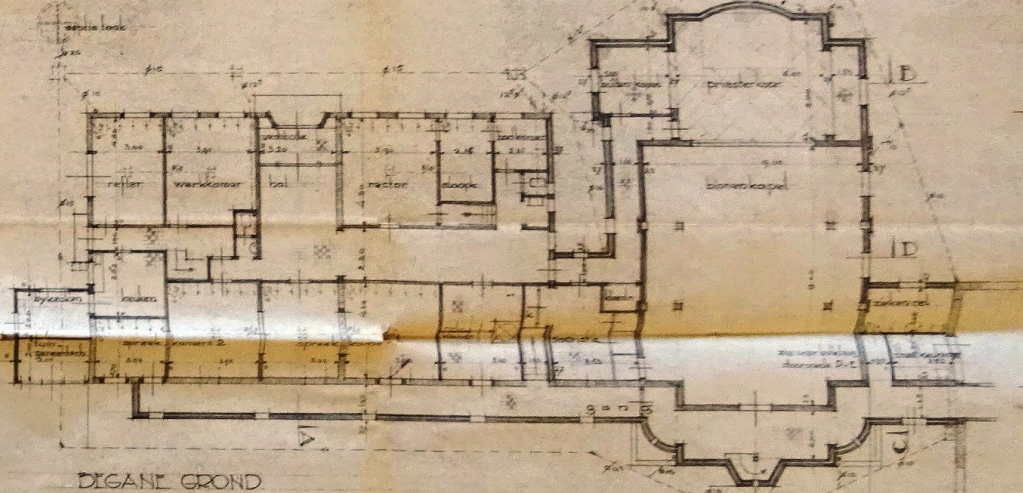
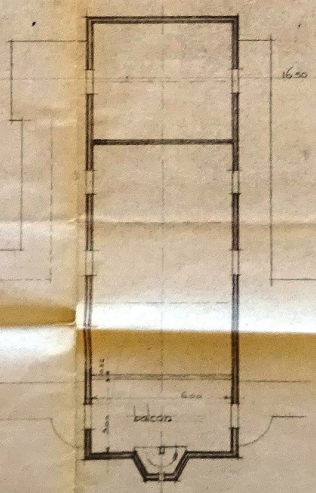
NADORGEVEL

DOORDEDE D

WESTGEVEL

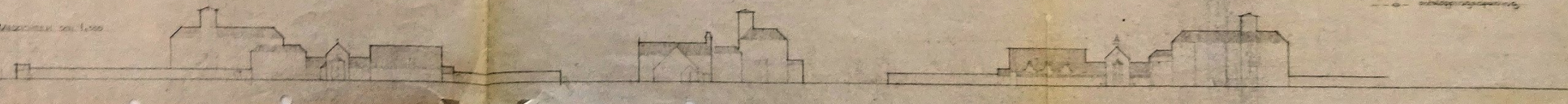


VLDDEPING



DEIGANE GROND

Maahtwerk op 1:500

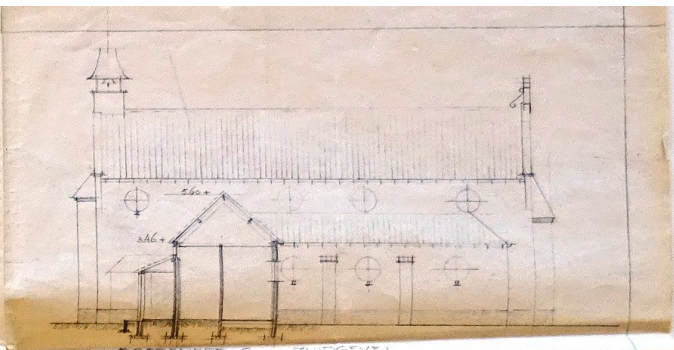
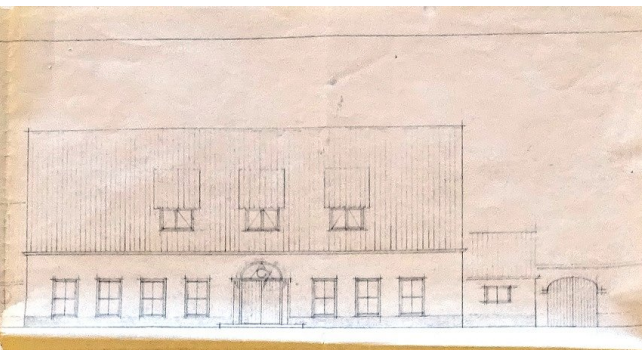




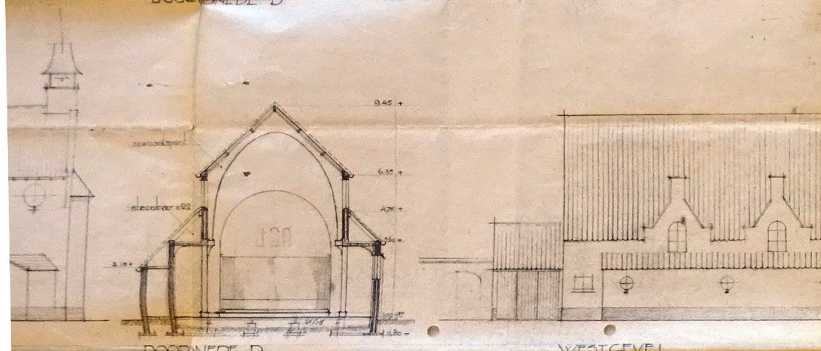


DOORSNED E

OOSTGEVEL

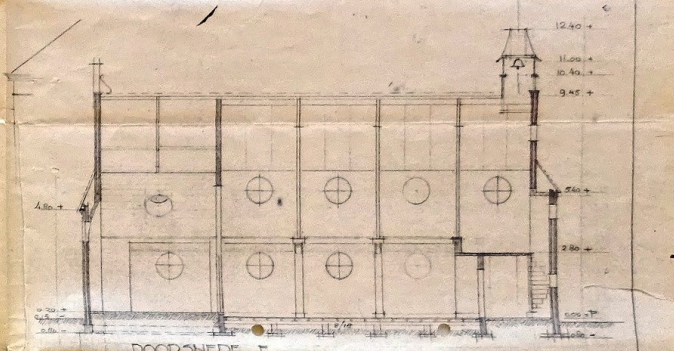


DOORSNED E ZUIDGEVEL

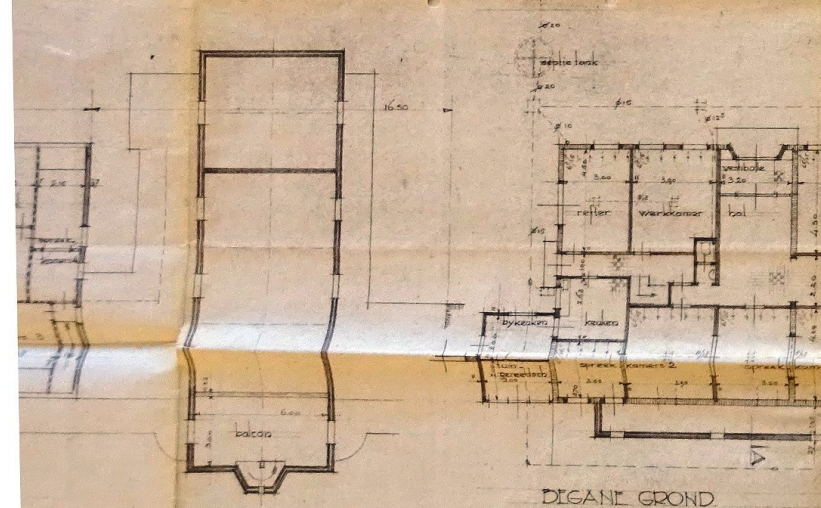


DOORSNED D

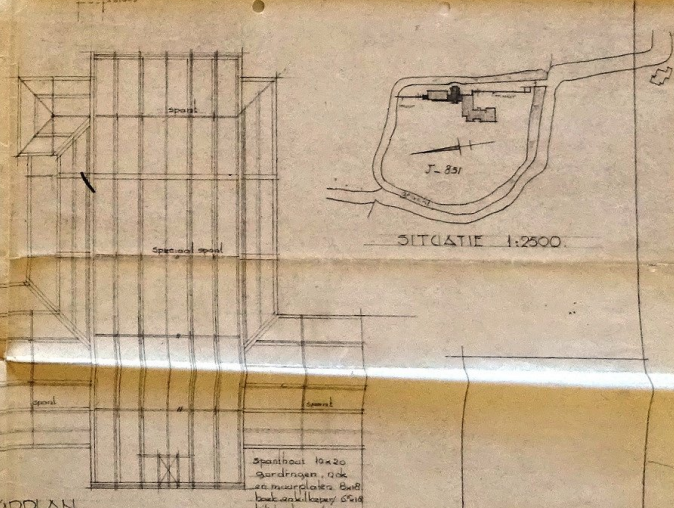
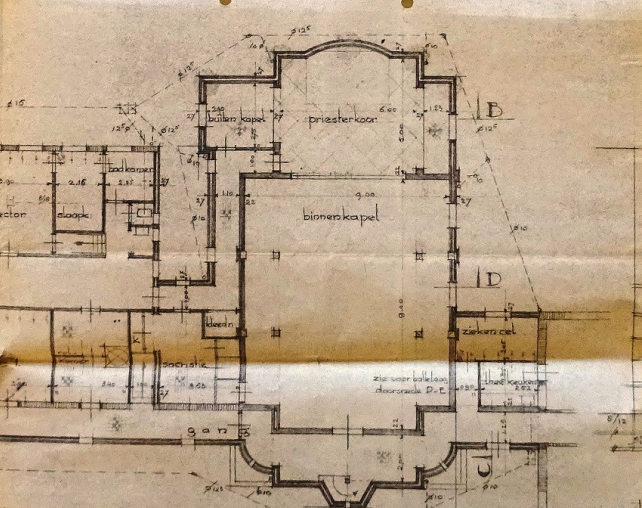
WESTGEVEL



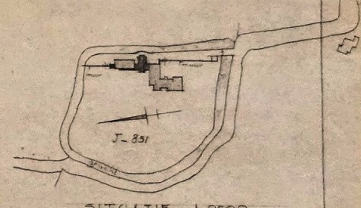
DOORSNED F



DIGANE GROND



KAPPLAN



SITUATIE 1:2500

- Beslaard metselwerk
- nieuw
- - - - - afgevoerd
- - - - - afgevoerd
- - - - - afgevoerd

ont. 1:100, datum 2/10/52 get. A gew.  
 VERBOUWING EN UITBREIDING VAN  
 HUIZE 'HUYVEL' TOT KLOOSTER  
 ST. CLARA TE HENGLO

BESTEKTEKENING  
 GEMEENTE HENGLO (142)  
 J.L. VAN HOUTE ARCHITECT  
 YORDEN



Behoort bij de  
 RIJKS-GOEDKEURING  
 Gemeente No. 142  
 GEMEENTE HENGLO  
 30 JAN 1952